

# LIGHTNING RIDGE FOSSIL DIG

20 – 25 August AND  
27 August - 1 September 2018

***A rare opportunity to join the search for fossils from the Age of Dinosaurs***

PHOTO: K. Robinson-Griffiths



110 million years ago, dinosaurs roamed the land around a great Australian inland sea. Giant long-necked sauropods, ferocious theropods and diminutive plant-eating ornithomimids shared this world with everything from crocodiles and turtles to tiny mammals, yabbies and snails. Lightning Ridge was a forested floodplain at the edge of this ancient sea. Today, 'the Ridge' is famous for its opal and its fossils. It is the most prolific dinosaur fossil site in NSW.

Searching for opalised fossils is a privilege usually available only to opal miners and scientists. **You can share incredible moments of discovery as the Australian Opal Centre and Australian Geographic Society invite you to join the search for fossils on the opal fields.**

### Six days PACKED with discovery...

Guided by experts, you will go to special locations on the opal fields of Lightning Ridge, seeking new specimens for the Australian Opal Centre's globally significant collection of opalised fossils. Your discoveries will further establish this collection as a world-class scientific and cultural resource. You will:

- Learn about opalised fossils and Australia in the Age of Dinosaurs
- Learn to recognise and identify fossils and geological specimens
- Search for fossils with privileged access to carefully guarded sites
- Discover diverse opalised plant and animal fossils
- Hunt for opals at a tailout - the moment of truth for the opal miner
- Collect and process fossil-rich opal clays and siltstones
- Find, group and record specimens including microfossils
- Mend, reassemble or prepare fossils
- Learn techniques for casting and moulding specimens
- Attend fascinating lectures on opals and opal mining history, opalised fossils and dinosaur hunting
- Experience an underground opal mine (optional)

*...and enjoy the extraordinary sights, sounds and hospitality of the opal fields.*

**ELIGIBILITY:** Anyone 18 years and over is eligible; no experience is required. Maximum of 40 places ONLY (2 separate groups of 20 volunteers).

**WHEN:** WEEK 1 Mon. 20 to Sat. 25 August 2018. WEEK 2 Mon. 27 August to Sat. 1 September 2018. *Note: Week 2 is available for return participants only.*

**LOCATION:** The incredible outback opal mining town of Lightning Ridge, Australia.

**COST:** \$2,200 per person (incl. GST); return digger \$1,980. Includes all activities and most meals; excludes accommodation and transport. This is a scientific and fundraising venture for the Australian Opal Centre and Australian Geographic Society.

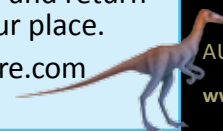
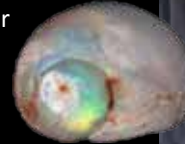
**TO SECURE YOUR PLACE:** Complete and send in your registration and deposit; participants will be accepted on a first come, first served basis.

### YOU WILL BE LED AND GUIDED BY:

Dr Phil Bell, a dinosaur specialist at the University of New England. Phil has uncovered and studied dinosaurs around the globe including Argentina, Canada, Mongolia, and Kazakhstan. Dr Elizabeth Smith, a palaeontologist, artist, author and authority on Lightning Ridge's fossils. Jenni Brammall, manager of the Australian Opal Centre and a palaeontologist, gemmologist and designer. Dr Nic Campione, a Canadian palaeontologist now at the University of New England. Clytie Smith and Cybele Sousa de Lemos, super fossil finders.... and other great team members!

**DON'T MISS OUT - REGISTER NOW!** Complete and return the attached Registration Form today to secure your place.

**FIND OUT MORE** - email [dig@australianopalcentre.com](mailto:dig@australianopalcentre.com) or call Jenni on 0427 904 587.



# LIGHTNING RIDGE FOSSIL DIG

## 20 – 25 August AND 27 August - 1 September 2018

A rare opportunity to join the search for fossils from the Age of Dinosaurs at Lightning Ridge

# Registration Form

Use this form to register to participate in the 2017 Lightning Ridge Fossil Dig (payment information below).

Please send your form and payment to:

[dig@australianopalcentre.com](mailto:dig@australianopalcentre.com) or Australian Opal Centre, PO Box 229, Lightning Ridge, NSW 2834

YOUR DETAILS

NAME .....

ADDRESS .....

TOWN/CITY ..... STATE .....

POSTCODE/ZIP CODE ..... COUNTRY .....

TELEPHONE (home/work) ..... TELEPHONE (mobile) .....

DATE OF BIRTH ..... EMAIL .....

I wish to apply to participate in the Lightning Ridge Fossil Dig 2017 and my preferred dates are:

20 -25 Aug  26 Aug -1 Sept (return Diggers only)  I'm a return Digger and either week's fine

Do you have special dietary requirements? .....

Any medical condition/s? .....

Do you have skills or interests relevant to the Fossil Dig? .....

SIGNATURE ..... DATE .....

*Cost is \$2,200 per person. Participants on a previous Lightning Ridge Fossil Dig are offered a special Return Digger price of \$1,980. A non-refundable deposit of \$500 is required to secure your place, with full payment due by 30 June 2018. If for any reason you need to cancel, you may apply your deposit towards another Australian Opal Centre event any time in the following two years. If you cancel 6 or more weeks prior to the Dig we will refund you except for your deposit; cancellations less than 6 weeks prior result in forfeiture of payment.*

### PAYMENT AMOUNT:

Please tick AMOUNT

Full payment (First Lightning Ridge Dig) **\$2,200**  .....

Full payment (Return Digger) **\$1,980**  .....

Deposit **\$500**  .....

Donation (donations over \$2 are tax deductible)  .....

**TOTAL**  .....

Cost includes all activities, most meals and a year's membership of the Australian Opal Centre; it does not include travel or accommodation.

All money raised will support the work of the palaeontologists, the AOC and the AGS.



PAYMENT

### PAYMENT METHOD:

Cash  Cheque  Visa  Mastercard  Direct deposit

Card No. .... Expiry Date: .... / ....

Name on card: ..... Signature: .....

For direct deposit: Account - LROFC Inc BSB - 032561 Acc no - 118355

**Please put your name in the Description for your direct deposit transaction**



AUSTRALIAN  
OPAL  
CENTRE  
LIGHTNING RIDGE · NSW

NEXT?

## What happens next?

On receiving your \$500 deposit we'll send confirmation of your acceptance. Your balance of payment (if not paid in full) will not be due until 2018. In May 2018 you'll receive a field guide with a program and information about accommodation, travel, what to bring and what to expect. Meanwhile, if you have questions, please get in touch! Email [dig@australianopalcentre.com](mailto:dig@australianopalcentre.com) or call Jenni on 0427 904 587.

ABN 20 377 425 512  
[www.australianopalcentre.com](http://www.australianopalcentre.com)  
[contact@australianopalcentre.com](mailto:contact@australianopalcentre.com)  
+61 2 6829 1667  
PO Box 229, Lightning Ridge,  
NSW 2834, Australia