

THE AUSTRALIAN OPAL CENTRE AND AUSTRALIAN GEOGRAPHIC SOCIETY LIGHTNING RIDGE FOSSIL DIG

7 - 12 AND 14 - 19 AUGUST 2017

*A rare opportunity
to join the search
for fossils from the
Age of Dinosaurs*



110 million years ago, dinosaurs roamed the land around a great Australian inland sea. Giant long-necked sauropods, ferocious theropods and diminutive plant-eating ornithopods shared this world with everything from crocodiles and turtles to tiny mammals, yabbies and snails. Lightning Ridge was a forested floodplain at the edge of this ancient sea. Today, 'the Ridge' is famous for its opal and its fossils. It is the most prolific dinosaur fossil site in NSW.

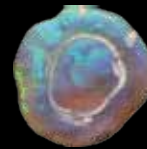


Searching for opalised fossils is a privilege usually available only to opal miners and scientists. **Now, you can share incredible moments of discovery as the Australian Opal Centre and Australian Geographic Society invite you to join the search for fossils on the opal fields.**

Six days PACKED with discovery...

Guided by leading experts, you will go to special locations on the opal fields of Lightning Ridge, seeking new specimens for the Australian Opal Centre's globally significant collection of opalised fossils. Your discoveries will further establish this collection as a world-class scientific and cultural resource. You will:

- Learn about opalised fossils and Australia in the Age of Dinosaurs
- Learn to recognise and identify specimens
- Search for fossils with privileged access to carefully guarded sites
- Discover diverse opalised plant and animal fossils
- Hunt for opals at a tailout - the moment of truth for the opal miner
- Collect and process fossil-rich opal clays and siltstones
- Find, group and record specimens including microfossils
- Expose and extract fossils from sandstone blocks
- Mend and reassemble fossils; learn techniques for casting, moulding and preserving specimens
- Attend fascinating lectures on opals and opal mining history, opalised fossils, dinosaur hunting and feathered dinosaurs
- Look for fossils in the walls of an underground opal mine (optional)



...and enjoy the extraordinary sights, sounds and hospitality of the opal fields.

ELIGIBILITY: Anyone 18 years and over is eligible; no experience is required. Maximum of 40 places ONLY (2 separate groups of 20 volunteers).

WHEN: Mon. 7 August to Sat. 12 August AND Mon. 14 to Sat. 19 August 2017

LOCATION: The incredible outback opal mining town of Lightning Ridge, Australia.

COST: \$2,200 per person (incl. GST); return digger \$1,980. Includes all activities and most meals; excludes accommodation and transport. This is a scientific and fundraising venture for the Australian Opal Centre and Australian Geographic Society.

TO SECURE YOUR PLACE: Complete and send in your registration and deposit; participants will be accepted on a first come, first served basis.

YOU WILL BE LED AND GUIDED BY:

Dr Phil Bell, a palaeontologist and dinosaur specialist at the University of New England. Phil has uncovered and studied dinosaurs around the globe including Argentina, Canada, Mongolia, and Kazakhstan.

Dr Elizabeth Smith, a palaeontologist, artist, author and world authority on Lightning Ridge's fossils. Jenni Brammall, manager of the Australian Opal Centre and a palaeontologist, gemmologist, designer and opal addict. John Pickrell, the editor of Australian Geographic Magazine, a dinosaur enthusiast and author of *Flying Dinosaurs: How Fearsome Reptiles Became Birds* and *Weird Dinosaurs*.



DON'T MISS OUT - REGISTER NOW! Complete and return the attached Registration Form today to secure your place.

Or to **FIND OUT MORE** - call 02 8005 1667, 02 6829 1667 or email dig@australianopalcentre.com.

AUSTRALIAN OPAL CENTRE
ABN 20 377 425 512
www.australianopalcentre.com
Tel. +61 2 6829 1667

LIGHTNING RIDGE FOSSIL DIG

7 – 12 August 2017 AND 14 - 19 August 2017

A rare opportunity to join the search for fossils from the Age of Dinosaurs at Lightning Ridge

Registration Form

Use this form to register to participate in the 2017 Lightning Ridge Fossil Dig (payment information below).

Please send your form and payment to:

dig@australianopalcentre.com or Australian Opal Centre, PO Box 229, Lightning Ridge, NSW 2834

YOUR DETAILS

NAME

ADDRESS

TOWN/CITY STATE

POSTCODE/ZIP CODE COUNTRY

TELEPHONE (home/work) TELEPHONE (mobile)

DATE OF BIRTH EMAIL

I wish to apply to participate in the Lightning Ridge Fossil Dig 2017 and my preferred dates are:

7-12 August OR 14-19 August OR Either week is fine for me

Do you have special dietary requirements?

Any medical condition/s?

Do you have skills or interests relevant to the Fossil Dig?

SIGNATURE DATE

Cost is \$2,200 per person. Participants on a previous Lightning Ridge Fossil Dig are offered a special Return Digger price of \$1,980. A non-refundable deposit of \$500 is required to secure your place, with full payment due by 30 June 2017. If for any reason you need to cancel, you may apply your deposit towards another Australian Opal Centre event any time in the following two years. If you cancel 6 or more weeks prior to the Dig we will refund you except for your deposit; cancellations less than 6 weeks prior result in forfeiture of payment.

PAYMENT AMOUNT:

Please tick AMOUNT

Full payment (First Lightning Ridge Dig) **\$2,200**

Full payment (Return Digger) **\$1,980**

Deposit **\$500**

Donation (donations over \$2 are tax deductible)

TOTAL

Cost includes all activities, most meals and a year's membership of the Australian Opal Centre; it does not include travel or accommodation.

All money raised will support the work of the palaeontologists, the AOC and the AGS.



PAYMENT

PAYMENT METHOD:

Cash Cheque Visa Mastercard Direct deposit

Card No. Expiry Date: /

Name on card: Signature:

For direct deposit: Account - LROFC Inc Events BSB - 032561 Acc no - 202311

Please put your name in the Description for your direct deposit transaction



AUSTRALIAN
OPAL
CENTRE
LIGHTNING RIDGE • NSW

NEXT?

What happens next?

On receiving your \$500 deposit we'll send confirmation of your acceptance. Your balance of payment (if not paid in full) will not be due until 2017. In May 2017 you'll receive a field guide with a program and information about accommodation, travel, what to bring and what to expect. Meanwhile, if you have questions, please get in touch! Email dig@australianopalcentre.com or call 02 6829 1667.

ABN 20 377 425 512
www.australianopalcentre.com
contact@australianopalcentre.com
+61 2 6829 1667
PO Box 229, Lightning Ridge,
NSW 2834, Australia